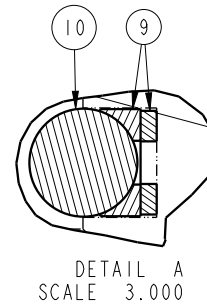
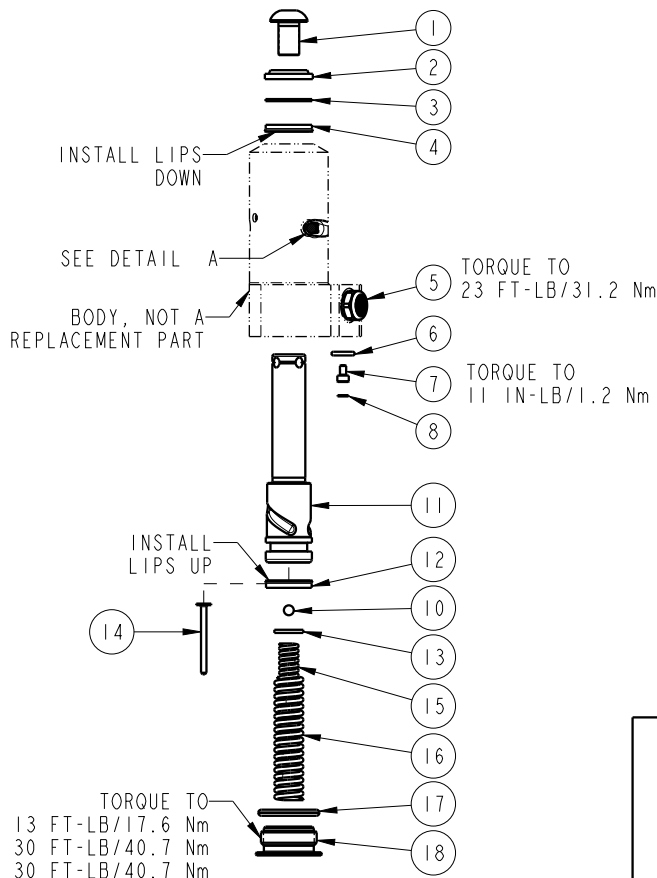


NO.	QTY	DESCRIPTION	MODEL NUMBER			STANDARD SEAL KIT	FLOUROCARBON SEAL KIT	SPRING KIT
			41-5202-1X	41-5205-1X	41-5211-1X			
1	1	BUTTON HEAD CAP SCREW	21-5000-08	21-5000-09	21-5000-10	NO	NO	NO
2	1	WIPER, ROD (FLUOROCARBON)	39-0530-04	39-0530-01	39-0530-00	YES	YES	NO
3	1	BACK-UP RING, ROD	39-F540-00	39-F540-01	39-F540-02	YES	YES	NO
4	1	SEAL, ROD (STANDARD)	39-0100-38	39-0100-20	39-0110-46	YES	NO	NO
	1	SEAL, ROD (FLUOROCARBON)	39-0520-14	39-V100-20	39-V110-46	NO	YES	NO
5	1	BREATHER	49-0019-04	49-0019-04	49-0019-05	NO	NO	NO
6	2	O-RING, MANIFOLD MOUNT	39-0500-42	39-0500-42	39-0500-42	YES	NO	YES
	2	O-RING, MANIFOLD MOUNT (FLUOROCARBON)	39-0510-25	39-0510-25	39-0510-25	NO	YES	NO
7	2	BUTTON HEAD CAP SCREW	21-5000-18	21-5000-18	21-5000-19	NO	NO	NO
8	1	WASHER	21-5002-00	21-5002-00	21-5002-00	NO	NO	NO
9	1	BALL SEAT ASSEMBLY	90-1999-88	90-1999-89	90-1999-90	YES	YES	NO
10	2	BALL, STEEL ALLOY	23-6000-14	23-6000-11	23-6000-02	YES	YES	YES
11	1	PLUNGER	47-5105-00	47-5109-00	47-5113-00	NO	NO	NO
12	1	SEAL, PLUNGER (STANDARD)	39-0100-36	39-0100-15	39-0110-27	YES	NO	NO
	1	SEAL, PLUNGER (FLUOROCARBON)	39-0520-10	39-0520-11	39-0520-12	NO	YES	NO
13	1	PIVOT DISK	N/A	81-5909-01	81-5913-01	NO	NO	YES
14	1	SPRING GUIDE	81-5905-01	N/A	N/A	NO	NO	YES
15	1	INNER SPRING	23-3100-08	23-3110-13	23-3130-09	NO	NO	YES
16	1	OUTER SPRING	23-3110-17	23-3130-08	23-3130-10	NO	NO	YES
17	1	O-RING, RETAINER (FLUOROCARBON)	39-V000-36	39-0510-31	39-V510-43	YES	YES	YES
17	1	RETAINER	81-4000-28	81-4000-29	81-4000-30	NO	NO	NO
N/A	N/A	SEAL KIT (STANDARD)	46-1501-05	46-1501-02	46-1501-03	INCLUDED IN KIT		
N/A	N/A	SEAL KIT (FLUOROCARBON)	46-V501-05	46-V501-02	46-V501-03			
N/A	N/A	SPRING KIT	61-4140-01	61-4140-02	61-4140-03			



PARTS LIST



VEKTEK, INC.
1334 E. SIXTH AVE. P.O. BOX 625
EMPORIA, KS. 66801 U.S.A.

B	5803	RELEASE	JDW	09/04/25
REV	IN ACCORDANCE WITH ECN	EFFECTIVE DATE	REVISED BY	DATE
DRW BY:	NPETERS	DRAWING STATUS: Released		
DATE:	8/9/21	PRODUCTION APPROVED FOR RELEASED STATUS ONLY		

ASSEMBLIES AFFECTED
41-5202-13, 41-5205-13, 41-5211-13
41-5202-14, 41-5205-14, 41-5211-14
41-5202-16, 41-5205-16, 41-5211-16

PARTS LIST, SC, METRIC, BF, VC, SA	
SIZE A	MPL1543
REV B	

FORM FEG035_PL_ASIZE, REV. B

SHEET 1 OF 1